

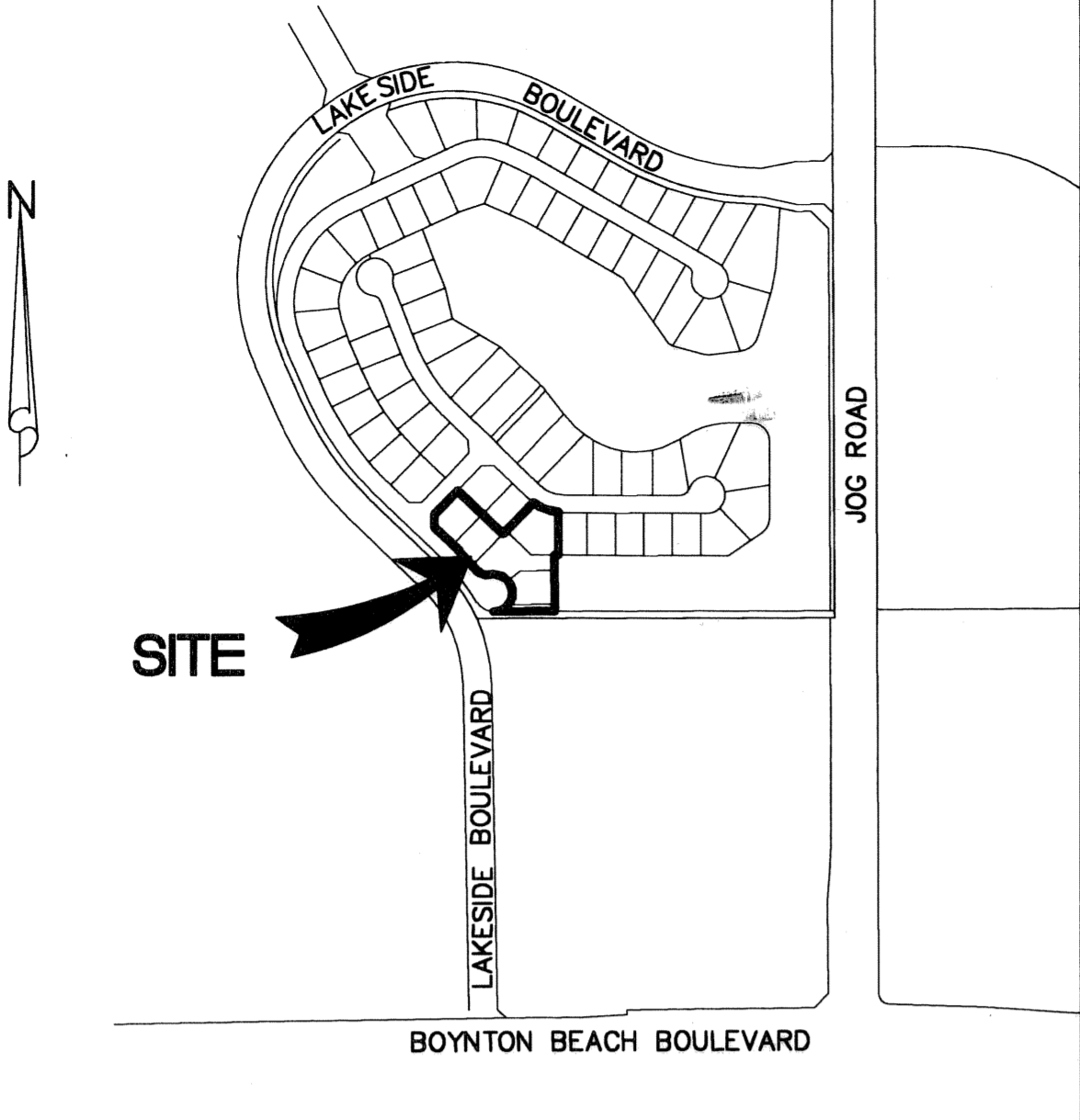
94

0391-020

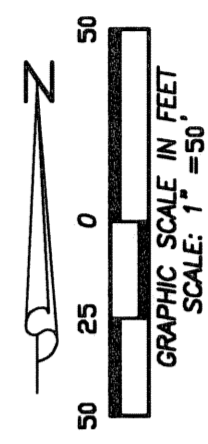
# ENCLAVE AT BOYNTON WATERS - REPLAT NO. 3

AT LAKES OF BOYNTON BEACH P.U.D., POD B  
 SITUATE IN SECTION 22, TOWNSHIP 45 SOUTH, RANGE 42 EAST, PALM BEACH COUNTY, FLORIDA  
 BEING A REPLAT OF LOTS 66, 69, 70, 71 & 72 OF ENCLAVE AT BOYNTON WATERS, AS RECORDED IN PLAT  
 BOOK 99, PAGES 105 THROUGH 109, INCLUSIVE, OF THE PUBLIC RECORDS OF PALM BEACH COUNTY, FLORIDA  
 AUGUST, 2005  
 SHEET 2 OF 2

STATE OF FLORIDA  
 COUNTY OF PALM BEACH  
 THIS PLAT WAS FILED FOR  
 RECORD AT \_\_\_\_\_  
 THIS \_\_\_\_\_ DAY OF \_\_\_\_\_  
 A.D. 2005 AND DULY RECORDED  
 IN PLAT BOOK \_\_\_\_\_ ON  
 PAGES \_\_\_\_\_ THROUGH \_\_\_\_\_  
 SHARON R. BOCK, CLERK  
 AND COMPTROLLER  
 BY: \_\_\_\_\_  
 DEPUTY CLERK



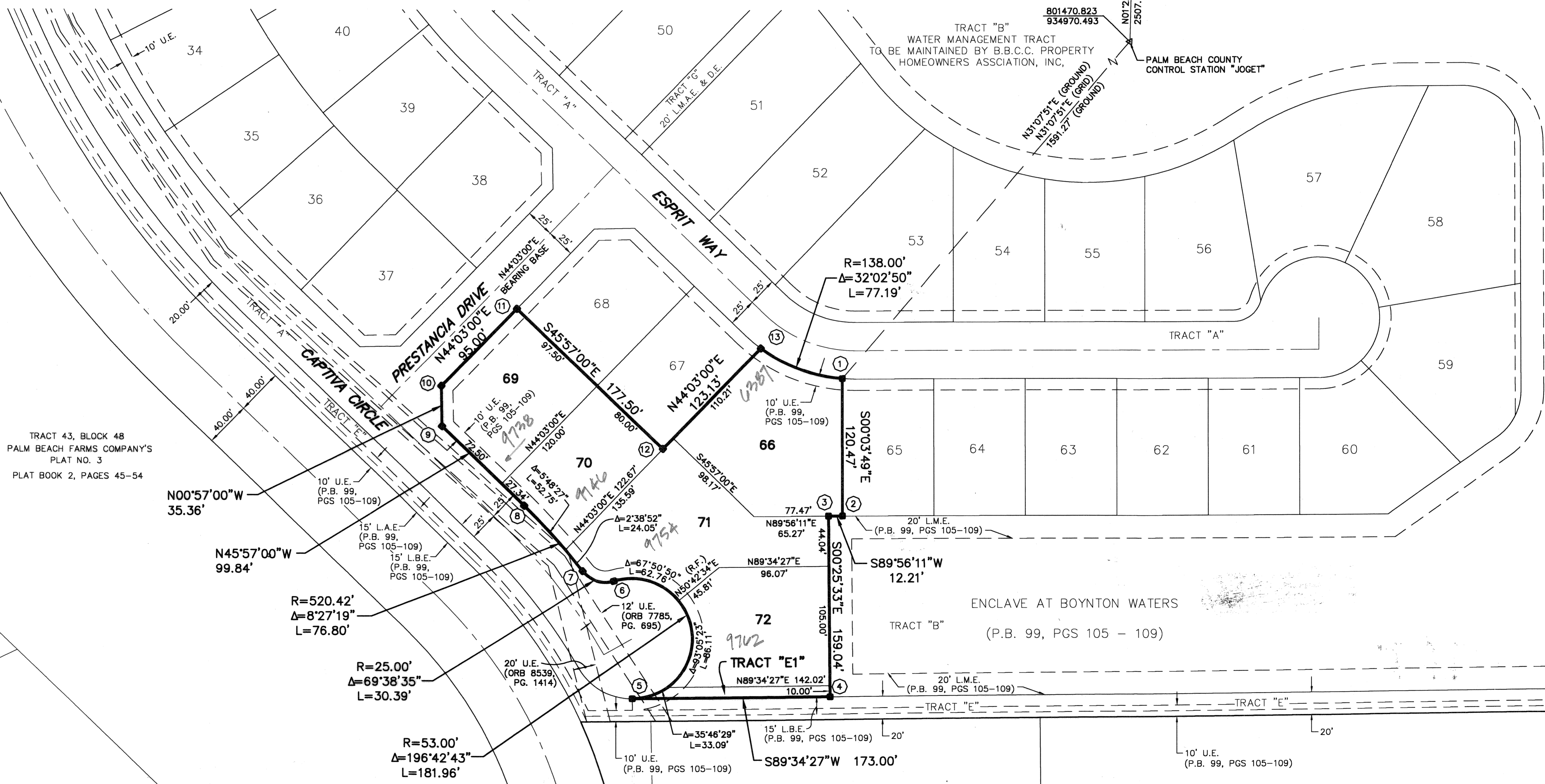
- LEGEND**
- D.E. = DRAINAGE EASEMENT
  - R = RADIUS
  - Δ = CENTRAL ANGLE/DELTA
  - L.A.E. = LIMITED ACCESS EASEMENT
  - L = ARC LENGTH
  - L.B.E. = LANDSCAPE BUFFER EASEMENT
  - O.R.B. = OFFICIAL RECORDS BOOK
  - P.B. = PLAT BOOK
  - PGS. = PAGES
  - U.E. = UTILITY EASEMENT
  - = PERMANENT REFERENCE MONUMENT (PRM)  
 SET PRM LB 7055



LOCATION MAP

STATE PLANE COORDINATES

1	N 800108.670	E 934147.789
2	N 799988.197	E 934147.923
3	N 799988.183	E 934135.714
4	N 799829.142	E 934136.897
5	N 799827.855	E 933963.896
6	N 799931.505	E 933947.884
7	N 799940.178	E 933920.681
8	N 799997.449	E 933869.615
9	N 800066.869	E 933797.854
10	N 800102.220	E 933797.267
11	N 800170.502	E 933863.322
12	N 800047.085	E 933990.901
13	N 800135.585	E 934076.514



TRACT 43, BLOCK 48  
 PALM BEACH FARMS COMPANY'S  
 PLAT NO. 3  
 PLAT BOOK 2, PAGES 45-54

NOTE: ALL TRACT AND LOT DESIGNATIONS REFER TO ENCLAVE AT BOYNTON WATERS, AS RECORDED IN PLAT BOOK 99, PAGES 105 THROUGH 109

SUBDIVISION ENCLAVE AT BOYNTON WATERS - REPLAT 3  
 BOOK 106 PAGE 94  
 FLOOD ZONE 12  
 ZONING RS  
 SEAL # 25  
 TAZ 443  
 PLAT NAME LAKES OF BOYNTON BEACH

**Wantman Group, Inc.**  
 Engineering ♦ Surveying ♦ Mapping  
 2035 VISTA PARKWAY, SUITE 100  
 WEST PALM BEACH, FL 33411  
 (561) 687-2220 phone (561) 687-1110 fax  
 CERT No. 6091 - LB No. 7055